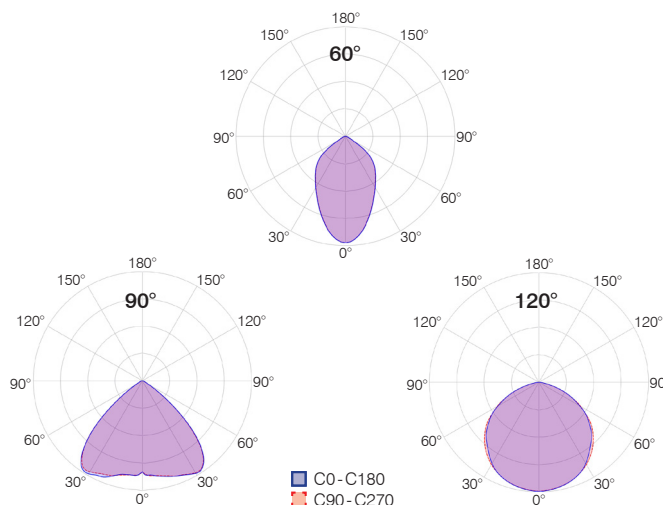


Hall and area lighting

GIFAS
ELECTRIC

SYSTEMATIC QUALITY





Technical data

Operating voltage:	100 - 277 VAC (50/60 Hz)
System performance:	86W/111 W/128 W
Luminous flux clear glass:	12'801 lm/16'432 lm/18'636 lm
Luminous flux frosted glass:	11'540 lm/14'052 lm/16'461 lm
Light efficiency:	150 lm/W/148 lm/W/146 lm/W
Light colour:	4'000 K/5'000 K (3'000 K on request)
Light source:	SMD-LEDs
Colour rendering index:	Ra > 80
Beam angles:	60°/90°/120°
Operating life:	[L70/B10] > 80'000 h
Protection category:	IP65
Protection class:	I
Dimming:	optional DALI
Operating range of temperature:	
- AlphaLUXX 80:	-30° C to +60° C
- AlphaLUXX 100:	-30° C to +55° C
- AlphaLUXX 120:	-30° C to +50° C
Max. surface temperature:	+90° C (suitable for use in industrial premises with fire hazards), D rating label
Cover:	toughened glass, 5 mm (versions available transparent or frosted) optional PC, impact-resistant plastic cover, 5 mm
Weight:	approx. 7.0 kg
Measurements (L×W×H):	389×252×106.5 mm
Housing:	Die-cast aluminium
Housing surface:	PTFE-coated, suitable for the food industry
Housing colour:	black
Connection:	1 m connection cable, 3×1.5 mm ² H07RN
Certification:	ENEC, CE, suitable for IFS (International Featured Standard)

Other versions on request (e.g. 3'000 K, ball-impact resistant according to DIN VDE 0710-13)

Main features

- robust housing made of corrosion-resistant die-cast aluminium (alloy: 230 D)
- dirt-resistant PTFE surface coating, approved for the food industry
- 5 mm toughened glass, PC panel also available
- custom-made U-profile seal surrounding all sides
- durable, heat-conducting film for lasting reliable dissipation of heat from the LED board
- low heat generation thanks to the latest LED technology
- pressure compensation element for extreme temperature fluctuations
- full luminous flux is available instantly after switching on
- low energy consumption with high light output
- maintenance-free
- wide operating temperature range (up to 60° C)
- no UV/IR radiation
- vibration-resistant
- many accessories available from stock

Standard range clear glass and frosted glass

	Clear glass		Frosted glass	Designation
	4'000 K*	5'000 K**	5'000 K**	
✓	860965	✓ 860964	✓ 860963	AlphaLUXX 80, 230 VAC, IP65, connection cable 1 m 3×1.5 mm ²
✓	860968	✓ 860967	✓ 860966	AlphaLUXX 100, 230 VAC, IP65, connection cable 1 m 3×1.5 mm ²
✓	860973	✓ 860972	✓ 860969	AlphaLUXX 120, 230 VAC, IP65, connection cable 1 m 3×1.5 mm ²

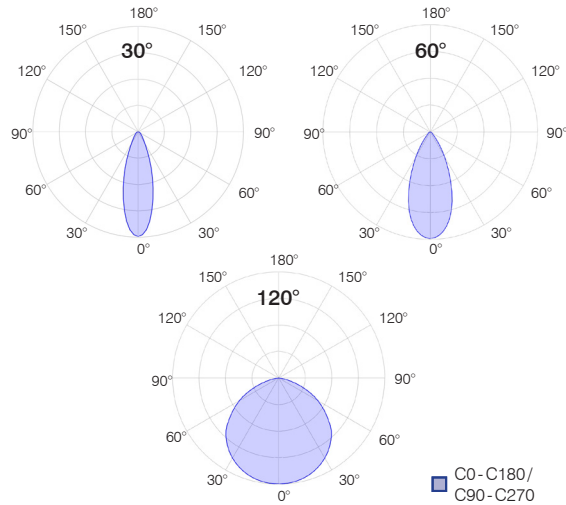
* 4'000 K = 4'000 Kelvin, light colour comfort white
** 5'000 K = 5'000 Kelvin, light colour cool white

Special executions

800480	AlphaLUXX 120, 5'000 K, dimmable DALI, 230 VAC, clear glass, 1 m cable
✓ 860970	AlphaLUXX 120, for Internation Food Standard, glass polycarbonate, 230 VAC, 5'000 K, 18'636 lm, IP65, connection cable 1 m, 3×1.5 mm ²
✓ 800069	AlphaLUXX 120, for motor vehicle sector, 20 - 48 VDC, clear glass, 5'000 K, 18'636 lm, P65, connection cable 5 m, 2×2.5 mm ²

✓ From stock, offer subject to prior sale





Technical data

Operating voltage: 100 - 277 VAC (50/60 Hz)
 System performance: 95 - 270 W
 Luminous flux: 16'400 - 40'230 lm
 Light colour: 5'000 K
 Light source: SMD-LEDs
 Colour rendering index: Ra > 80
 Beam angles: ~30° / ~60° / ~120°
 LED-Operating life: [L70/B10] > 80'000 h
 Protection category: IP65
 Protection class: I
 Dimming: optional DALI
 Operating range of temperature
 - 90 - 170: -30° C to +60° C
 - 200: -30° C to +55° C
 - 240 - 250: -30° C to +50° C
 Max. surface temperature: +90° C (suitable for use in industrial premises with fire hazards), D rating label
 Cover: 3 mm toughened glass (Vision) or 3 mm polycarbonate
 Weight: approx. 9.5 kg
 Measurements (Ø×H): 450×195 mm
 Housing: Die-cast aluminium
 Housing surface: PTFE-coated
 Housing colour: black
 Certification: ENEC, CB, CE, D rating label

Properties

- robust housing made of corrosion-resistant die-cast aluminium
- dirt-resistant PTFE surface coating
- custom-made U-profile seal surrounding all sides or polycarbonate
- durable, heat-conducting film for lasting reliable dissipation of heat from the LED board
- low heat generation thanks to the latest LED technology
- low energy consumption with high light output
- maintenance-free
- wide operating temperature range (up to +60° C)
- no UV/IR radiation
- vibration-resistant

~30° beam angles

Item no.	Designation
800161	DeltaLUXX 150, 230 VAC, 5'000 K, 17'089 lm, ESG beam angles 30°, IP65, connection cable 1'000 mm
800163	DeltaLUXX 240, 230 VAC, 5'000 K, 24'418 lm, ESG beam angles 30°, IP65, connection cable 1'000 mm

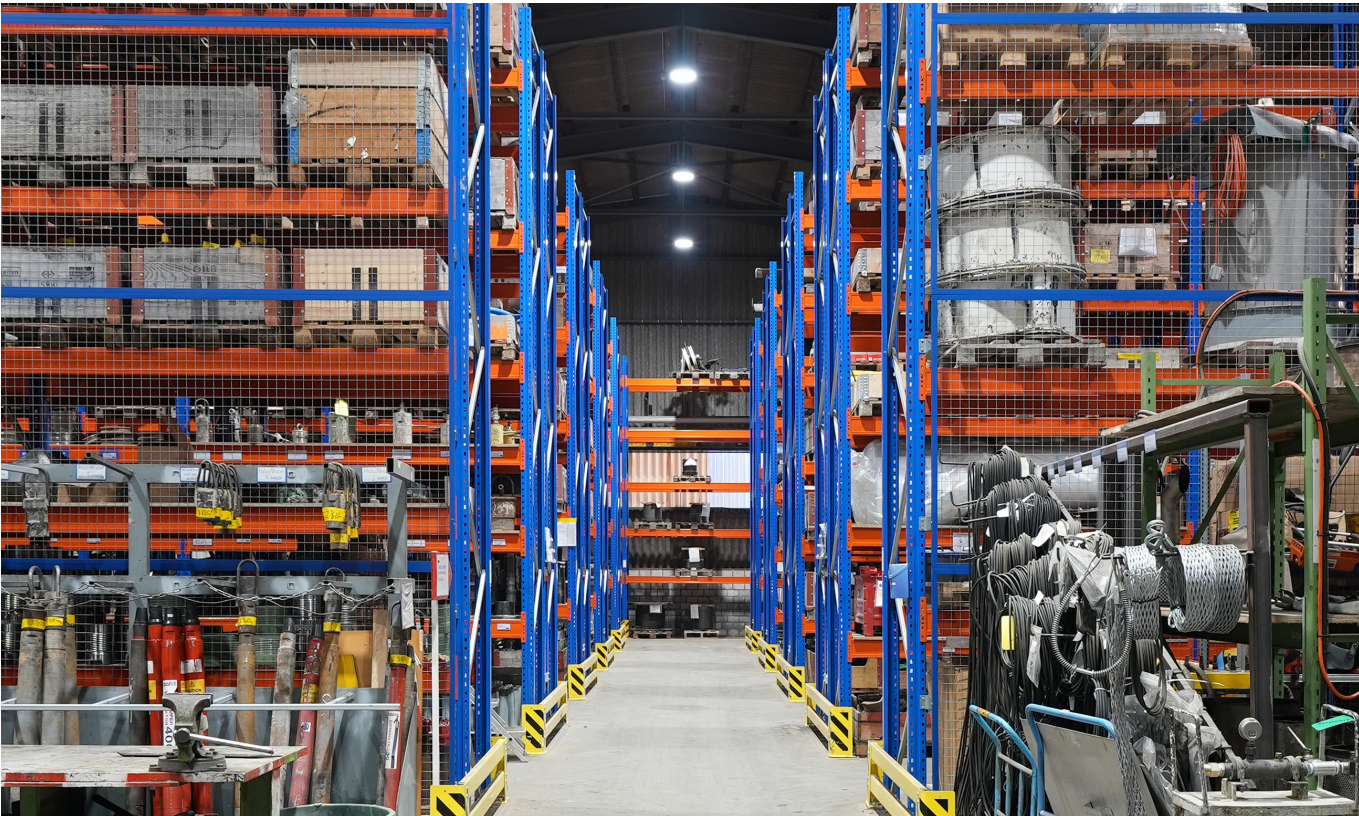
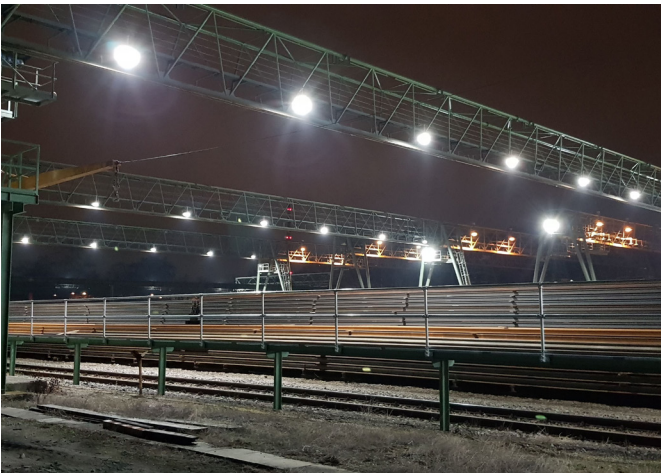
~60° beam angles

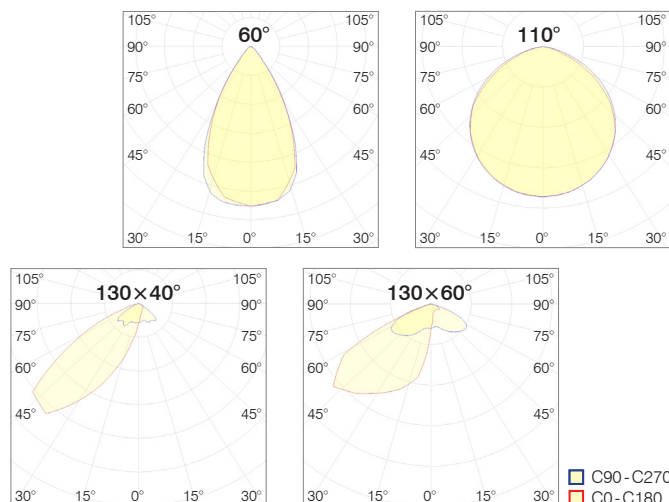
Item no.	Designation
800406	DeltaLUXX 2 130, 230 VAC, 5'000 K, 21'400 lm, PC beam angles 60°, IP65, connection cable 1'000 mm
800409	DeltaLUXX 2 250, 230 VAC, 5'000 K, 40'230 lm, PC beam angles 60°, IP65, connection cable 1'000 mm

~120° beam angles

Item no.	Designation
800288	DeltaLUXX 2 90, 230 VAC, 5'000 K, 16'400 lm, ESG beam angles 120°, IP65, connection cable 1'000 mm
✓ 800290	DeltaLUXX 2 130, 230 VAC, 5'000 K, 22'400 lm, ESG beam angles 120°, IP65, connection cable 1'000 mm
✓ 800292	DeltaLUXX 2 170, 230 VAC, 5'000 K, 28'100 lm, ESG beam angles 120°, IP65, connection cable 1'000 mm
800839	DeltaLUXX 2 170, 230 VAC, 5'000 K, 28'100 lm, DALI, ESG beam angles 120°, IP65, connection cable 1'000 mm
✓ 800294	DeltaLUXX 2 200, 230 VAC, 5'000 K, 32'400 lm, ESG beam angles 120°, IP65, connection cable 1'000 mm
✓ 800296	DeltaLUXX 2 250, 230 VAC, 5'000 K, 38'900 lm, ESG beam angles 120°, IP65, connection cable 1'000 mm
✓ 800302	DeltaLUXX 2 250, 230 VAC, 5'000 K, 38'900 lm, DALI, ESG beam angles 120°, IP65, connection cable 1'000 mm

✓ From stock, offer subject to prior sale





Technical Data

Operating voltage:	100 - 240VAC
System performance:	
– 450W:	460W
– 900W:	920W
– 1350W:	1380W
LED efficiency:	146lm/W
Incide of CRI:	Ra > 70
Operating life:	L80/B50 > 97'000h
LED switching capability:	> 1 mil
Protection category:	IP66
Impact resistance:	IK10
Protection class:	I
MacAdam:	3-step
Dimmable:	Yes
Operating range of temperature:	-20° C to +50° C
Integrated thermal management:	Yes
Max. surface temperature:	+90° C (suitable for use in industrial premises with fire hazards), D rating label

Weight:	
– 450W:	19.2kg
– 900W:	33.3kg
– 1350W:	42.8kg

Dimensions (l×h×w):	
– 450W:	390×685×240 mm
– 900W:	700×685×240 mm
– 1350W:	700×890×240 mm

Material housing:	Aluminium
Housing colour:	black
Connection:	0.8m connection cable, with a plug and socket connection
Swivel angle of bracket:	270°

*h = with bracket folded downwards

Product features

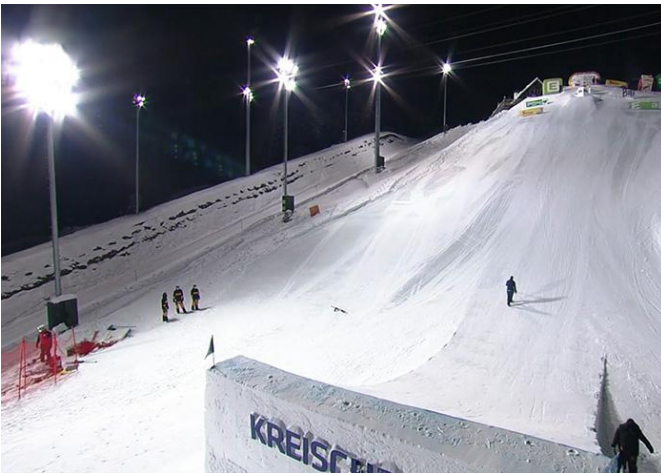
Modular LED light with symmetrical or asymmetrical lighting characteristics and Single LED technology. The HPL has a low-profile construction and is black powder-coated. It is provided with a 0.8m feed-in cable with a plug and socket connection for easy assembly.

- immediate full luminous flux
- low power consumption at very high light efficiency
- minimal temperatures progression
- high switching capability (>1 mil)
- large operating temperature range: -20° C to +50° C
- no UV/IR radiation
- insensible against shocks and vibrations

Item no.	Designation
✓ 861033	Wide area lighting system HPL 450W, 230VAC, 110° , 5'700K, 57'000lm, IP66, DALI
✓ 861034	Wide area lighting system HPL 450W, 230VAC, asymmetrical 130°×60° , 5'700K, 68'600lm, IP66, DALI
✓ 861002	Wide area lighting system HPL 900W, 230VAC, asymmetrical 130°×40° , 5'700K, 134'000lm, IP66, DALI
✓ 861004	Wide area lighting system HPL 1'350W, 230VAC, asymmetrical 130°×40° , 5'700K, 197'600lm, IP66, DALI

60° version available on request

Wide area lighting system HPL



GIFAS ELECTRIC

GIFAS-ELECTRIC GmbH
Dietrichstrasse 2
CH-9424 Rheineck

+41 71 886 44 44
+41 71 886 44 49
info@gifas.ch
www.gifas.ch

V1123

